

Product Presentation – B335CKG



- *Flat Floor Wall-to-Wall / No Wheel Wells*
- *16" Deluxe Aluminum Alloy Wheels*
- *Slideout Duo Bedroom Vanity/Wardrobe*
- *50" TV Entertainment Center*
- *40" Living Room Electric Fireplace w/Heat*
- *Luxury Galley Top Extension*
- *40" Bedroom TV*
- *30" Bedroom Fireplace w/Heat*
- *Dual Swivel Recliners*
- *On-Board Air Compressor/Tank Option*
- *Power Awning w/LED Light Strip*



GENESIS
S U P R E M E

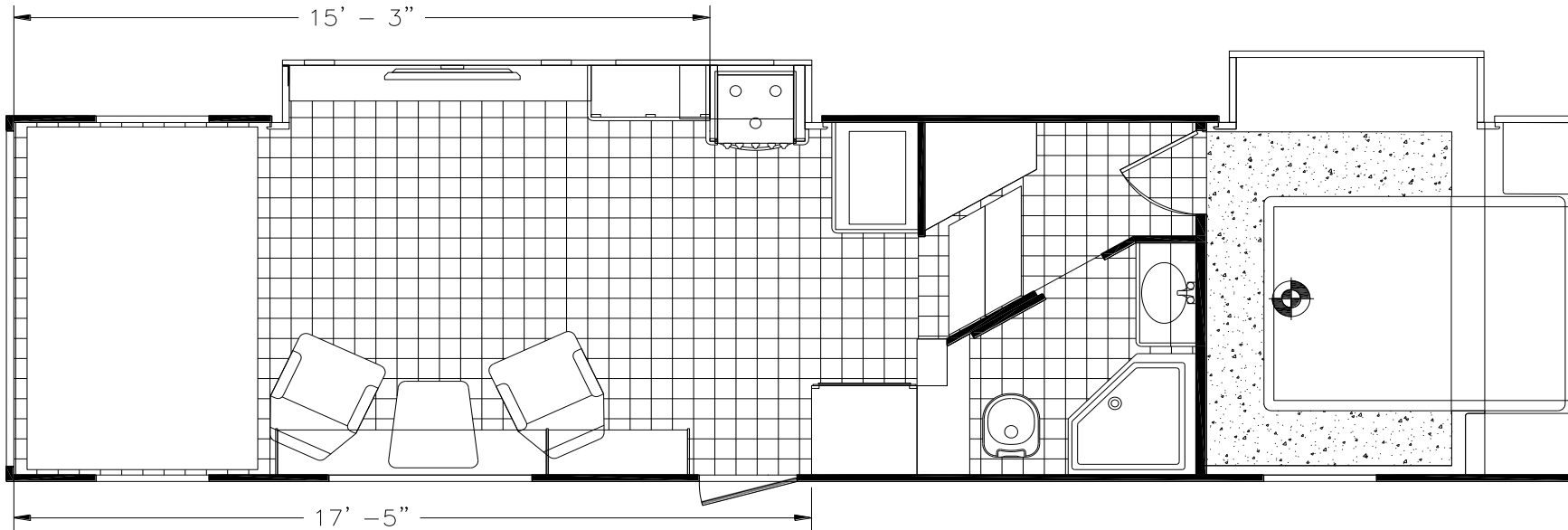
The Journey Begins...

B335CKG -- Exterior

102" Wide-Body, 16" Aluminum Alloy Wheels, Optional On-Board Air



335CKG Floorplan & Specs



OVERALL LENGTH – 36'-10"
GVWR (LBS.) – 15,000
DRY WEIGHT (LBS.) – 12,080
HITCH WEIGHT (LBS.) – 3,050

AXLE WEIGHT (LBS.) – 9,030
AXLE CAPACITY (LBS.) – 7,000
CARGO CAPACITY (LBS.) – 2920**
TIRE SIZE – 16"

FRESH WATER SIZE (GAL.) – 160
GRAY WATER (GAL.) – 50
BLACK WATER (GAL.) -- 50

All product data, graphics, and photography in this document were as accurate as possible at time of publication. Subsequent refinements during the model year may be evident in the actual product. Genesis Supreme reserves the right to change colors, materials, equipment and specifications without notice, and to add, modify or discontinue models shown in promotional materials. Standard/Optional Features and Specs may change without notice. Photographs of interiors & exteriors depicted on this website are strictly representational - colors, materials, appliances, fabrics, etc. may vary or change without notice. Unloaded vehicle weight and carrying capacity capacities will vary depending on optional equipment. Dry weight is measured from standard build and will vary with options. Weight of water, LP gas, fuel and options are not included in Cargo Capacity payload.

**** NOTE: Weights may change due to options added.**

Standard High-Value Features / Selling Points



Standard Features - Included in Base Price

- *Slideout Duo Vanity/Wardrobe in Bedroom*
- *4.0 KW ONAN Generator w/Transfer Switch*
- *A/C 15.0K BTU w/Ducting*
- *102" Wide Body Design*
- *Flipped Axles w/No Wheelwells (Flat Floor Wall-to-Wall)*
- *16" Deluxe Aluminum Alloy Wheels*
- *Two Swivel/Rocker Chairs w/Table*
- *Rear Table and Legs*
- *50" Living Room TV w/Swivel Bracket*
- *40" Bedroom TV w/Swivel Bracket*
- *Luxury Galley Top Extension*
- *Inset, Coffered Ceiling Panel w/LED & Accent Lights*
- *Countertop Edge LED Lighting - Switched*
- *Power Awning w/LED Light Strip*
- *30,000 BTU Furnace*
- *Slam-Door Luggage Compartments*
- *One-Piece PVC Vinyl Roof*
- *Stereo AM/FM/CD/DVD w/Bluetooth/USB*
- *Extra-Large Double Door Refrigerator (10 Cu. Ft.) w/Dual Hinge*
- *Stylish Entertainment Center w/50" TV in Living Room Slide*
- *40" Fireplace 110V Heater in Living Room Slide*
- *Rear Spoiler*
- *Ceiling Fan*
- *Rear Screen Wall*
- *Metal Lavy Sink w/Stylish Faucet*
- *Three-Burner Range w/Oven*
- *Spray-Away®*
- *TV Antenna w/Cable & Satellite Hook-Up*
- *Two (2) Stab Jacks (Rear)*
- *12V Powered Fan Lavy Roof Vent*
- *Bunk Area Roof Vent*
- *Skylight Above Shower*
- *Black Tank Flush*
- *Carpet Kit*
- *Bunk Ladder*
- *Plumbed for Exterior LP Hookup*
- *LED Rope Lights/Living Room Valances*
- *LED Interior Lighting Throughout*
- *Dual 30-Lb. LP Tanks*
- *30" Fireplace 110V Heater in Bedroom*
- *T-King Walk around bed*

Popular Options



- **Power & Cooling Upgrade Pkg***
- **EZ-Flex® Suspension**
- **12v On-Board Air Compressor**
- **Tool Box**
- **Patio Railing System**
- **Rear Power Patio Awning**
- **Wireless Backup Camera**
- **Wi-Fi Ready**
- **Dual 8,000 Lb. Axles**
- **200W Solar w/1500W Pass-Thru Inverter**
- **2nd Gray Tank**
- **Stainless Steel Galley Package**
- **Central Vacuum System**
- **Keyless / Remote Entry Lock**
- **Frameless Dual-Pane Windows**
- **Double Insulated Roof**
- **Upgraded Lavy Fan w/Remote**
- **Upgraded Rear or Bedroom Fan w/Remote**
- **Arctic Package****
- **Cable Kit**
- **Winterized**

Supreme Package

- Dual Landing Gear Motors w/Dual Switch
- 7000 lb. Triple Axles with 16" Wheels/Load Range G Tires
- 40-Gallon Fuel Station
- External 110v Electrical Outlets
- Spare Tire & Carrier

Deluxe Package

- Power Rear Sofa Bed & Powered Upper Bunk
- Shower & Glass Enclosure
- Stainless Deep Galley Sink w/Pull-Down Faucet
- Microwave (Extra Large Over-the-Range Residential)
- Exterior TV Bracket & Hookups
- Three 12v USB Chargers
- Black Roller Shades Throughout
- Solid Surface Galley Countertop w/Covers

***Power & Cooling Upgrade Package**

- Includes:* 5.5KW Onan Generator Upgrade
- 13.5K BTU Bedroom AC w/ Wall Control - 50-Amp Service

****Arctic Package**

- Includes:* Heated, Enclosed Tanks/Valves
- Reflected Floor Insulation
- Heat Ducting System For Furnace
- Double Ceiling Insulation

Premier Package

- 8-Foot Laminated Ramp Door w/Beaver Tail
- Aluminum-Framed, Hi-Gloss Fiberglass Laminated Sidewalls
- Large Designer Front Cap w/LED's
- Exterior Folding Ladder w/Walk-on Roof
- 10-Gallon Two-Way 110v / LP DSI Water Heater
- Sewer Hose Compartment
- LED Exterior Flood Lights
- LED Exterior Running Lights & Taillights

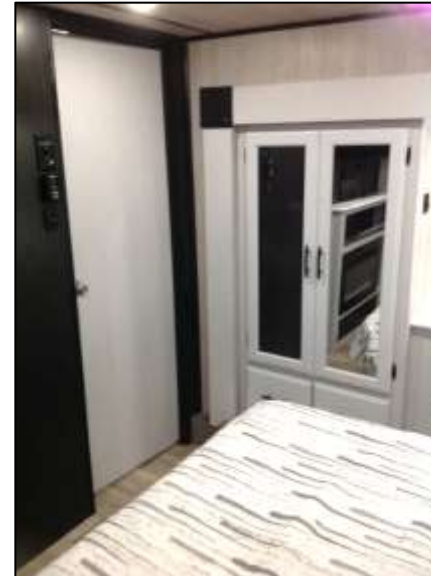
Beautifully-Appointed Interior, Well-Equipped & Functional



Efficient, Well-Appointed Kitchen w/Generous Storage



Bedroom w/Walkaround King Bed / Hallway Wardrobe



Bathroom w/ Large Fiberglass Shower & Glass Enclosure



Exterior Features



Pass-Thru Storage



Onan 5.5KW Generator



40-Gallon Fuel Station



1500W Inverter



Exterior Folding Ladder & Walk-On Roof



Water Hose Sprayer



Exterior TV Hookups & Bracket



Optional On-Board Air Compressor



Battery Disconnects



“Arctic” Package

Interior Features



Dual Swivel Rockers w/Table



Media Control Center



Dual Facing Dinette & Tables



Generous Storage



Solid Surface Counter Tops/Glass Cooktop Cover

B335CKG

Thank you – please contact us & visit our website!



Genesis Supreme RV
23129 Cajalco Road
Perris, CA 92570
(951) 337-0254
genesissupremerv.com



The Journey Begins...