

# Product Presentation — G3215FSXL



## New Floorplan Prominent Features:

- **10" I-Beam Chassis**
- **Fiberglass Laminated Aluminum Frame Sidewalls**
- **102" Wide-Body Design**
- **One-Piece PVC Vinyl Roof**
- **7' Ramp Door w/Full Length Latches**
- **4.5K Yamaha Inverter Generator**
- **Front Power Jack**
- **40-Gallon Fuel Station**
- **Plumbed for Exterior LP Hookup**
- **200W Solar Panel**
- **Extra Large Tinted/Radius Windows w/Valances**
- **Entertainment Center w/50" TV & Fireplace**
- **Opposing Rear Power Dinette**
- **Pillowtop Mattress w/Bedsread**

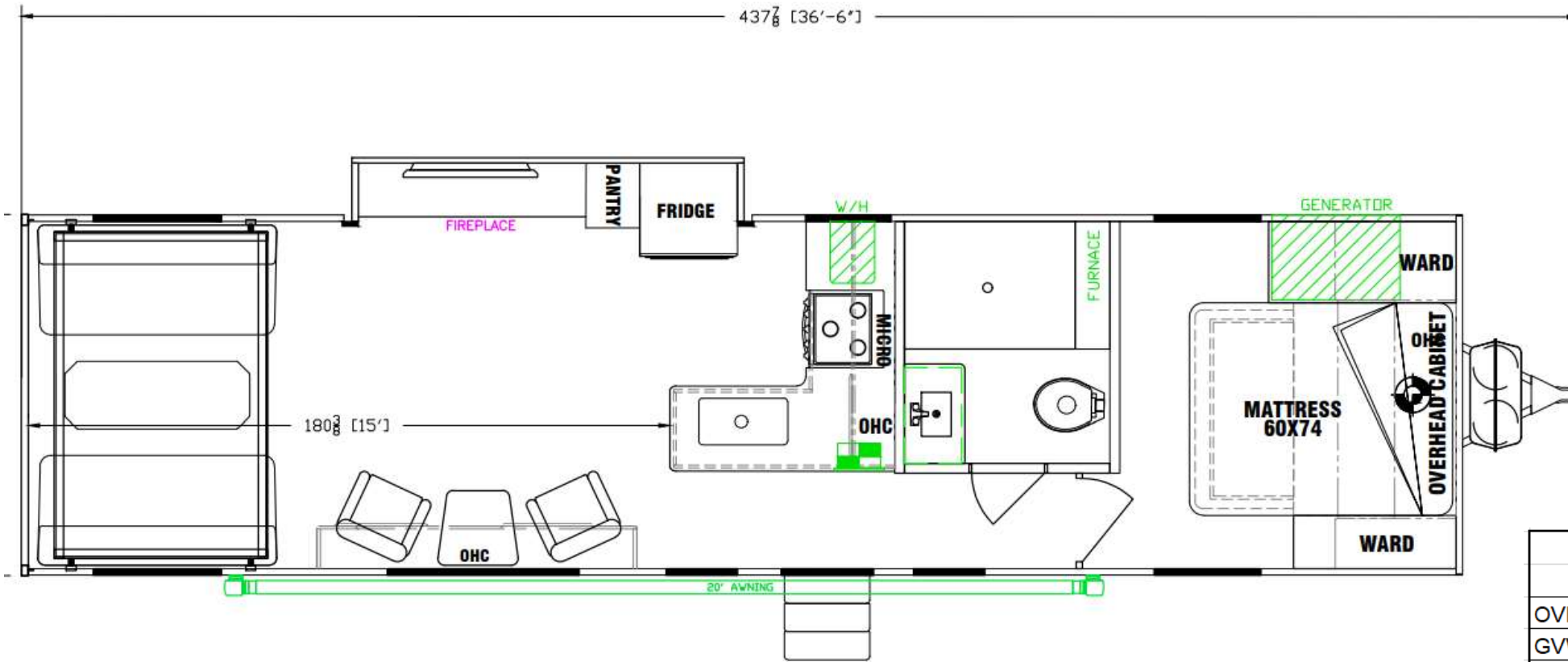


**Toyhauler**

# G3215FSXL Exterior



# G3215FSXL Floorplan & Specs



All product data, graphics, and photography in this document were as accurate as possible at time of publication. Subsequent refinements during the model year may be evident in the actual product. Genesis Supreme reserves the right to change colors, material, equipment and specifications without notice, and to add, modify or discontinue models shown in promotional materials. Standard/Optional Features and Specs may change without notice. Photographs of interiors & exteriors depicted on this website are strictly representational - colors, materials, appliances, fabrics, etc. may vary or change without notice. Unloaded vehicle weight and carrying capacity capacities will vary depending on optional equipment. Dry weight is measured from standard build and will vary with options. Weight of water, LP gas, fuel and options are not included in Cargo Capacity payload.

UNIT SPECS		3215FSXL
OVERALL LENGTH		36'6"
GVWR (lbs)		13,000
DRY WEIGHT (lbs)		9,332
HITCH WEIGHT (lbs)		1,282
AXLE WEIGHT (lbs)		8,050
AXLE CAPACITY (lbs) 3		6,000
CARGO CAPACITY (lbs)		3,668
TIRE SIZE		15"
FRESH WATER (GAL)		100
GRAY WATER (GAL)		40
BLACK TANK (GAL)		40
Note: Weights may change due to options added.		

# G3215FSXL Living Area

(Upholstered items shown in "Home Style Black" vinyl)



Dual Swivel Rockers



Centralized Monitor/Control Center



Opposing Power Dinette



Generous Overhead Storage



Soffit/Overhead Lighting



Entertainment Center w/40" TV & Fireplace

# G3215FSXL Galley



*Solid Surface Counter Tops*



*Stainless Galley Sink & Pullout Faucet*



*10 Cu. Ft./12Volt/Double Door Refrigerator*



*Convenient Pantry Storage Next to Refrigerator*



*3-Burner Cooktop/Oven w/Glass Cover*



*Generous Galley Storage*



*Bedside Wardrobe &  
Nightstand*



*60 X 74 Mattress*



*Bedside Wardrobe &  
Nightstand*





*Shower w/ Glass Door*



*Generous Bath Storage*



## Standard Features - Included in Base Price

- Fiberglass Aluminum-Framed Sidewalls
- One-Piece PVC Vinyl Roof
- 10" I-Beam Chassis
- 102" Wide-Body Design
- 100 Gallons Fresh Water
- Dual 30-Lb. LP Tanks w/Deluxe Cover
- Large, Over-the-Range Microwave
- Pillowtop Mattress w/Bedsread
- Exterior Hot & Cold Shower
- Extra-Large Tinted/Radius Windows & Valances
- Black Tank Flush
- Stainless Steel Galley Sink w/High-Rise Metal Faucet
- 6-Gallon Gas DSI Water Heater
- Inset Coffered Ceiling Panel w/LED & Accent Lights
- 30K Furnace
- 15" Aluminum Wheels
- Lavy Sink w/Medicine Cabinet
- 7-Foot Ramp Door w/Full Length Latches
- Above-Cabinet Storage w/Chrome Storage Bars
- 12V Powered Galley & Lavy Roof Vent Fans
- TV Antenna
- Sewer Hose Storage Compartment
- External 110V Electrical Outlets
- Exterior Metal Diamond Plate Front & Skirting
- Plumbed for Exterior LP Hookup
- Double Radius Entry Door Step
- Exterior Lights: 2 Porch, 2 Rear, 1 Front
- Tie-Downs Throughout
- Four(4) Stab Jacks
- Bunk & Bedroom Roof Vents
- Rear Spoiler
- 4.5KW Yamaha Inverter/Generator
- Opposing Rear Power Dinette
- Two (2) Swivel Rockers
- Living Room Slideout
- Entertainment Center w/50" TV & Fireplace

## Packages

### ➤ Exterior Premier Package

- 40-Gallon Fuel Station
- 15K BTU AC w/Ducting
- Spare Tire & Carrier
- Fiberglass Front Cap
- Power Awning IPO Std.
- 6000 Lb. Axle w/Load Range F Tires
- Front Power Jack
- Walk-on Roof w/Folding Ladder

### ➤ Interior Deluxe Package

- 3-Burner Stove w/Oven
- Shower & Glass Enclosure
- AM/FM/CD/DVD Player w/4 inside & 2 Outside Speakers
- All LED Interior Lighting
- Magazine Rack & Key Hooks
- Solid Surface Galley Top w/Sink Covers
- Upgraded Furniture
- 10 Cu. Ft. 12V Refrigerator
- Night Shades
- WiFi Ready

## Popular Options

### ➤ Arctic Package

- Enclosed, Heated Tanks
- Reflective Floor Insulation
- Double Roof Insulation
- Heat Duct System for Furnace
- Double Ceiling Insulation

### ➤ Comfort Package

- Includes: Two 13.5k ACs (Bedroom & Livingroom) w/ Ducting  
IPO single 15k w/Ducting

### ➤ Wireless Backup Camera

### ➤ EZ Flex Suspension (triple)

### ➤ 1500W Pass-thru Inverter

### ➤ 32" Bedroom TV

### ➤ 12V Air Compressor

### ➤ Patio Cables

# G3215FSXL Exterior Features



15" Aluminum Wheels/Load Range E Tires



7-Foot Ramp Door



Yamaha 4.5K Generator



Front Wrap w/Diamond Plate  
(Shown with Power Jack)



Patented Spoiler



Stab Jacks (Exterior Premier Package)

*G3215FSXL*

**Thank you – Please contact us & visit our Website!**



**Genesis Supreme RV**  
23129 Cajalco Road  
Perris, CA 92570  
(951) 337-0254  
[genesissupremerv.com](http://genesissupremerv.com)



*The Journey Begins...*